

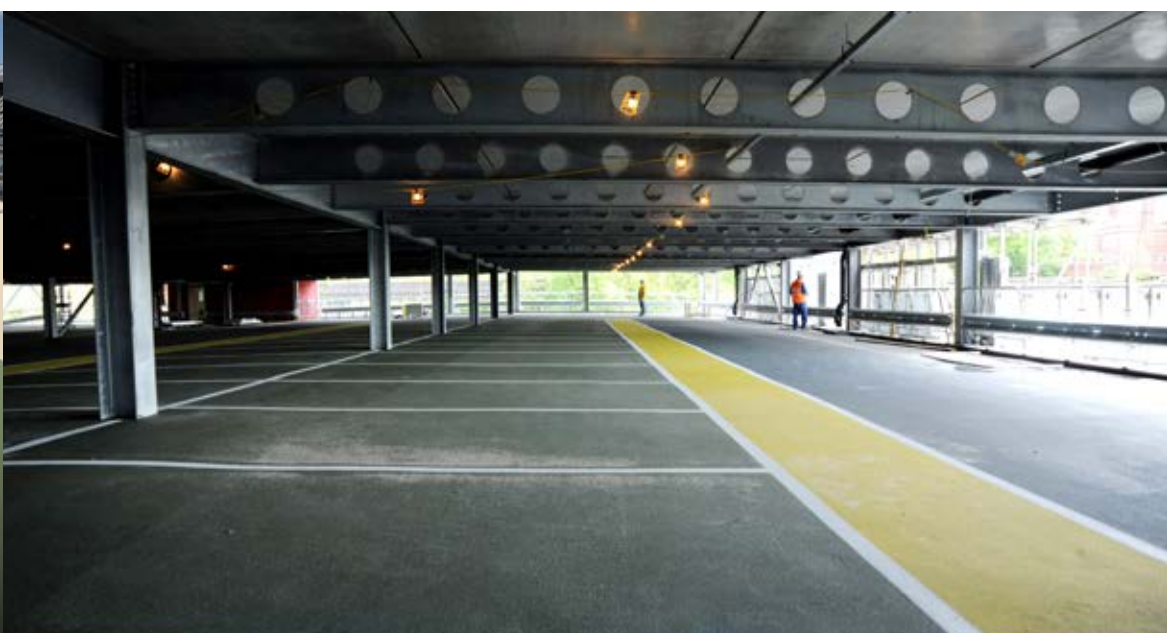
MULTI-STOREY CAR PARK REFURBISHMENT



- condition surveys ■
- deck waterproofing ■
- vehicle barriers ■
- concrete repair ■
- lighting & CCTV ■
- joint sealants ■

CRL IS A NATIONWIDE specialist contractor providing a comprehensive service for the inspection and refurbishment of multi storey and underground car parks. Car parks are important assets for many shopping centres and businesses and it is important for these to be maintained both for safety and commercial reasons. Working with our clients we undertake condition and structural assessments to identify the nature and extent of any defects using our survey division, CRL Surveys Ltd. We then advise on the repair options and costs so that CRL can deliver efficient, innovative solutions in a safe and professional manner with minimal disruption to users.

- Deck waterproofing
- Protective & decorative coatings
- New lighting & signage
- CCTV security
- Ticketing systems
- Vehicle barriers
- Condition surveys
- Concrete repair
- Structural assessment
- Structural strengthening
- Joint sealants
- Corrosion control



DECK WATERPROOFING is often used to enhance the appearance and durability of car parks. CRL is approved to install a range of deck waterproofing systems which are liquid applied to the decks

with the parking bays and traffic/pedestrian aisles delineated to enhance safety. The membranes are installed with proprietary joint systems to ensure the

decks are watertight. These membranes not only help protect the concrete decks from de-icing salts which are a major cause of the concrete deterioration but also dramatically improve the aesthetic appeal of the structure.

TOP DECK WATERPROOFING



THE SAFER PARKING SCHEME initiated by ACPO and Life Care Plans for car parks are recognised industry standards for the parking sector. The Safer Parking Scheme is managed by the British Parking Association and ensures that the car park provides a safe environment for users. Life Care Plans are an industry standard to ensure the structural integrity of the car park is managed throughout its service life. CRL is able to assist clients to ensure their parking structures meet these standards for the personal safety of users and structural integrity of the car park.



MANY CAR PARKS deteriorate due to corrosion of the reinforcement from de-icing salts, brought in by the vehicles, which causes the concrete to crack and spall. This is a safety hazard to the car park users



and if not treated will also structurally weaken the car park and lead to closure. CRL undertakes the repairs to the concrete and if required can design and install a

CORROSION CONTROL SYSTEMS

corrosion control system to improve durability all in accordance with the European Standards EN1504 and EN12696. The repair works are usually programmed to ensure that the car park can remain in limited use whilst ensuring the safety of the public.

Asda
Aviva Life & Pensions
Birmingham City Council
Cambridge City Council
Carmarthenshire County Council
City & County of Swansea Council
Exeter City Council
Guildford Borough Council
Hammerson plc
Hartlepool Borough Council
Isle of Man Government
Leeds City Council
Leicester Royal Infirmary

London Borough of Bromley
London Borough of Croydon
Macclesfield Council
Moray Council
National Car Parks
Ninewells Hospital
Northampton Borough Council
Nottingham City Council
Sainsburys
States of Jersey
Sunderland City Council
Swindon Borough Council
Vinci Parking

www.concrete-repairs.co.uk



LONDON & SOUTH EAST

Cathite House
23a Willow Lane
Mitcham, Surrey
CR4 4TU
020 8288 4848
london@crl.eu.com

NORTH EAST & MIDLANDS

Portland House
Britannia Road
Chesterfield
S40 2TZ
01246 544 900
chesterfield@crl.eu.com

SOUTH WEST & SOUTH WALES

The Old Boiler House
Burnett Business Park
Gypsy Lane, Keynsham
Bristol, BS31 2ED
0117 986 8088
bristol@crl.eu.com

SCOTLAND

Carron House
16 Winchester Avenue
Denny, Falkirk
FK6 6QE
01324 821 400
falkirk@crl.eu.com

NORTH WEST & NORTH WALES

Bridgewater House
Old Coach Road
Runcorn, Cheshire
WA7 1QT
01928 567070
runcorn@crl.eu.com